

Kingsbury News & Information Newsletter - February 11, 2024

1 message

**Kingsbury Newsletter** <kingsburytexas@send.mailchimpapp.com>

Reply-To: kingsburytexas@gmail.com

To: "[FNAME]" <kingsburytexas@gmail.com>

Sun, Feb 11, 2024 at 7:06 PM

# Kingsbury Texas

News & Information Newsletter



Dear Kingsbury,

Here's the latest on what's going on in Kingsbury!

## Valentines Day

Wednesday, February 14th, is Valentine's Day.

The traditions of Valentine's Day are broad and many. It is a time to exchange cards or small gifts. Chocolates, flowers, jewelry, and romantic dinners are the big hits of this holiday.

It is a romantic event for lovers, and a fun event for kids and family. Many a couple become engaged or wed on this day. For others it is a day to fall in love.

But it didn't start that way!

On February 14, around the year 278 A.D., Valentine, a holy priest in Rome in the days of Emperor Claudius II, was executed.

Under the rule of Claudius the Cruel, Rome was involved in many unpopular and bloody campaigns. The emperor had to maintain a strong army, but was having a difficult time getting soldiers to join his military leagues. Claudius believed that Roman men were unwilling to join the army because of their strong attachment to their wives and families.

To get rid of the problem, Claudius **banned** all marriages and engagements in Rome. Valentine, realizing the injustice of the decree, defied Claudius and continued to perform marriages for young lovers in secret. When Valentine's actions were discovered, Claudius ordered that he be put to death. Valentine was arrested and dragged before the Prefect of Rome, who condemned him to be beaten to death with clubs and to have his head cut off. The sentence was carried out on February 14, on or about the year 270.

Legend also has it that while in jail, St. Valentine left a farewell note for the jailer's daughter, who had become his friend, and signed it "From Your Valentine."

For his great service, Valentine was named a saint after his death.

Did you know? While 75% of chocolate purchases are made by women all year long, during the days and minutes before Valentine's Day, 75% of the chocolate purchases are made by men.

Just sayin'!





## Hot Chocolate Social

Kingsbury really turned out for the Hot Chocolate Social to learn more about the Seguin ETJ, get information on what Kingsbury is doing, get their paperwork going for a release of their property from the Seguin ETJ, and have some hot chocolate and snacks. The rain didn't appear to **deter** anyone from getting to downtown even though it really came down there for a while!

Thanks to everyone that came by Kingsbury Hall and especially those that waited in line. Everyone was eventually attended to and got their questions answered and their paperwork filed. Petitions for release from the Seguin ETJ will be submitted to Seguin over the next few days for action on their part.



## There's A Day For Everything

In case you didn't already know ... there's something every day to **celebrate**!  
Here are some of the fun, unusual, or forgotten holidays this week:

**February 11** - National Pork Rind Day, National Inventors Day, National Peppermint Patty Day, National Shut-In Visitation Day, National White Shirt Day, National Don't Cry Over Spilled Milk Day, National Make a Friend Day

**February 12** - National Football Hangover Day, National Plum Pudding Day, National Clean Out Your Computer Day

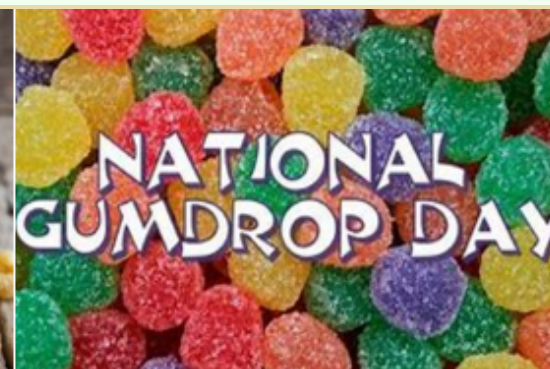
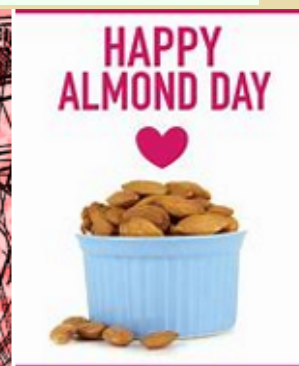
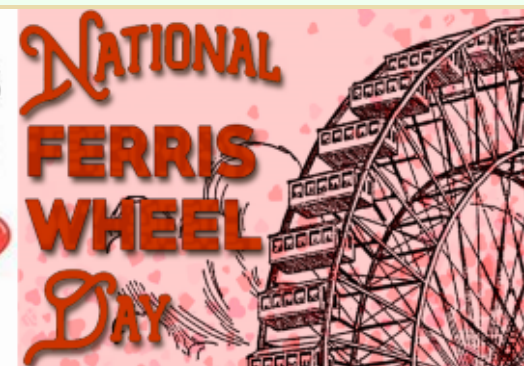
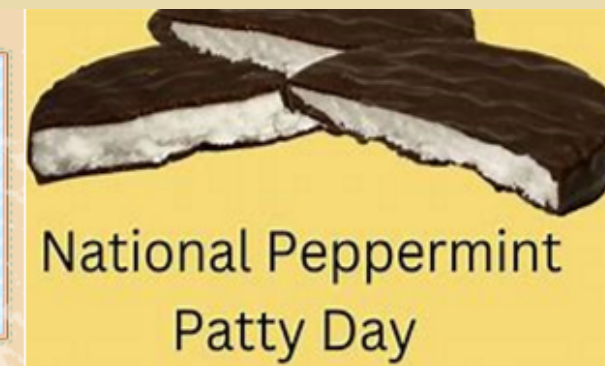
**February 13** - National Galentine's Day, National Fastnacht Day, National Paczki Day, National Cheddar Day, Fat Tuesday, National Pancake Day, National Tortellini Day, Ash Wednesday

**February 14** - National Cream-Filled Chocolates Day, Valentine's Day, National Ferris Wheel Day, National Organ Donor Day

**February 15** - National Wisconsin Day, National Singles Awareness Day, National Gumdrops Day

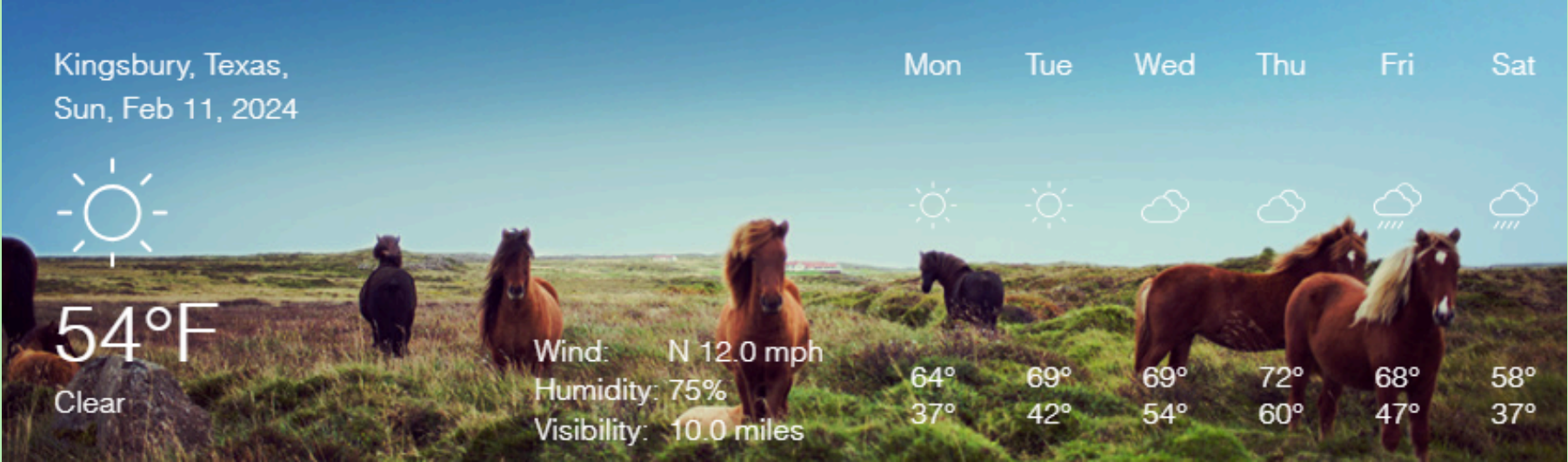
**February 16** - National No One Eats Alone Day, National Tartar Sauce Day, National Caregivers Day, National Do A Grouch A Favor Day, National Almond Day

**February 17** - National Red Sock Day, National Cabbage Day, National Random Acts of Kindness Day





Kingsbury weather for this week. You can always get the latest **weather** in Kingsbury on the Kingsbury website under [Calendar](#).



For current temperature, rainfall totals, wind speed, etc. just click on the bar at the bottom to go directly to the Baker Ranch weather station in Kingsbury. You can view local conditions and all the other weather stations in the TexMesonet network.

[Click here to check out the Texas Water Development Board "Baker Ranch" weather](#)

## Fat Tuesday

This Tuesday, February 13th, is Mardi Gras, also known as Fat Tuesday!

Mardi Gras (Fat Tuesday) is a festival held the day before Ash Wednesday (Shrove Tuesday), signifying the end of the Carnival season and the start of Lent. Many cities (especially those with large Catholic populations) like New Orleans are famous for their Mardi Gras.

During Mardi Gras, almost everyone takes part in celebrating with lavish parades and parties. Many different people celebrate Mardi Gras in their own way, some people have small parties and eat many of the **tasty** pastries and some people have huge parties and celebrate in a big way. Some of the pastries they eat are called king's cake, hot cross buns, punchskis, tricolor scrolls and thick sugar cookies. There are many more things that other people eat but these are the usual American celebration food for mardi gras. There are so many different parades and kinds of celebrations.

In some countries, including the United Kingdom, Ireland and Australia, the day is called Shrove Tuesday, Fat Tuesday, Pancake Tuesday, or Pancake Day.

***Laissez les bons temps rouler!***  
( *Let the good times roll!* )





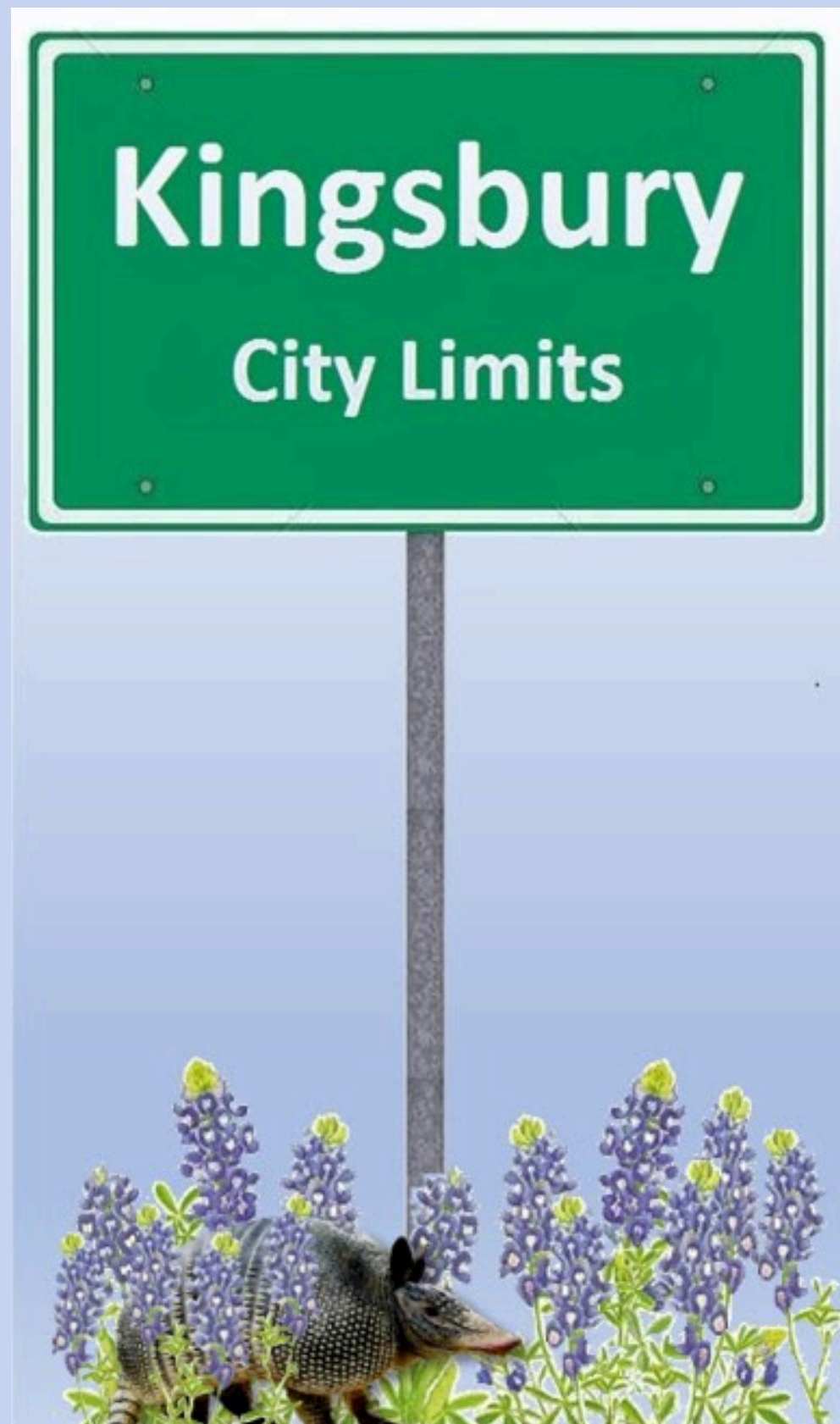
## Kingsbury City Limits

---

Do you have property in the Kingsbury area but not in the **official** Kingsbury city limits? Would you like it to be a part of the new city of Kingsbury? Let Kingsbury know! It's a simple "Voluntary Annexation" petition form to fill out and you can be on the list to be part of our Kingsbury.

Check out the "Kingsbury City Limits" page on the Kingsbury [website](#) to see the current map, get a petition form, and find more information on voluntary annexations.

Also, check out the Kingsbury "[Blog](#)" to see pictures of the first voluntary annexations! Need more information? Just fill out the "Contact" page on the Kingsbury [website](#) and a city official will get it to you. It's so easy!



**Chili Cookoff**

---





Big Easy Saloon Kingsbury

# Chili

## COOK-OFF



Join us for our 3rd Annual Chili Cookoff!  
Chili, Bean, and Bloody Mary Tastings

**Saturday March 30**

Big Easy Saloon Kingsbury  
620 Railway St, Kingsbury, TX 78638

Scan the QR Code for  
Rules and Regulations!







## Santa Anna Crosses Into Texas

This week in Texas history, on February 16th, 1836, Generalissimo Santa Anna crosses the Rio Grande River into Texas heading towards the Alamo.

The commander of the Alamo, J.C. Neill has to leave the Alamo on February 11th due to a family illness and appoints William Barret Travis as commander. Travis had only arrived at the Alamo the previous week along with 30 men and he and James Bowie agree upon joint command of the Alamo's forces. David Crockett has just arrived in Bexar near the Alamo with 12 men a few days prior. Travis sends out letters **pleading** for men and supplies this week just as Bowie had been doing since he arrived.

Col. James Fannin leaves Refugio on February 12th with his troops and assumes command at Presidio La Bahia in Goliad.

Now it is February 17th, the day after Santa Anna crossed the Rio Grande, and General Jose de Urrea also crosses that same river. In a few short days, Santa Anna will then arrive at the Medina River . . .



## Kingsbury Calendar

---


Do you have a meeting or public event that you want people to **know** about? Just let us know and we'll get it into the Kingsbury Newsletter and on the [Calendar](#) page of [kingsburytexas.org](http://kingsburytexas.org)!

Get in touch by replying to this email or by going to the Contact page on the Kingsbury [website](#).

It's a great way to find out what's going on around town and to let others know what meetings or events you have planned that your friends and neighbors might like to attend.



# KINGSBURY CALENDAR & WEATHER

Time zone: (GMT-06:00) 

< February 2024 >

Today

Sun	Mon	Tue	Wed	Thu	Fri	Sat
28   12:00pm M...	29	30	31	1 First Day of ...   7:30pm KfV...	2 Groundhog ...	3
4   12:00pm M...	5   9:30am Trail...	6	7	8	9	10   10:00am Fa...   3:00pm City...
11   12:00pm M...	12	13   6:30pm Dev...	14 Valentine's D...   5:30pm Ban...	15	16	17 Volunteer W...
18   12:00pm M...	19 Presidents' D...   6:30pm Kin...	20	21	22	23	24 Full Snow M...
25   12:00pm M...	26	27	28	29	1 First Day of ...	2

## Mutiny In The Texas Navy

This week in Texas history, on February 11, 1842, the first and only mutiny in the Texas Navy began. The schooner *San Antonio* was anchored in the Mississippi River at New Orleans. Although the high-ranking officers were ashore, the sailors and marines were confined aboard because of fear of desertion. But they evidently got drunk on **smuggled** liquor and, under marine sergeant Seymour Oswalt, began a mutiny in which Lt. Charles

Fuller was killed. Eventually, Commodore Edwin Moore brought some of the mutineers to trial. Three were sentenced to flogging, and four were hanged from the yardarm of the sloop-of-war *Austin* on April 6, 1843. Oswalt himself escaped from jail in New Orleans and was never brought to justice.

Later that year, the *San Antonio* was dispatched to the Yucatan by way of Galveston and Matagorda to attempt to raise funds for the Texas fleet. She did not reach Campeche, however but was lost at sea - never to be heard from again.



The schooner *San Antonio* under full sail.

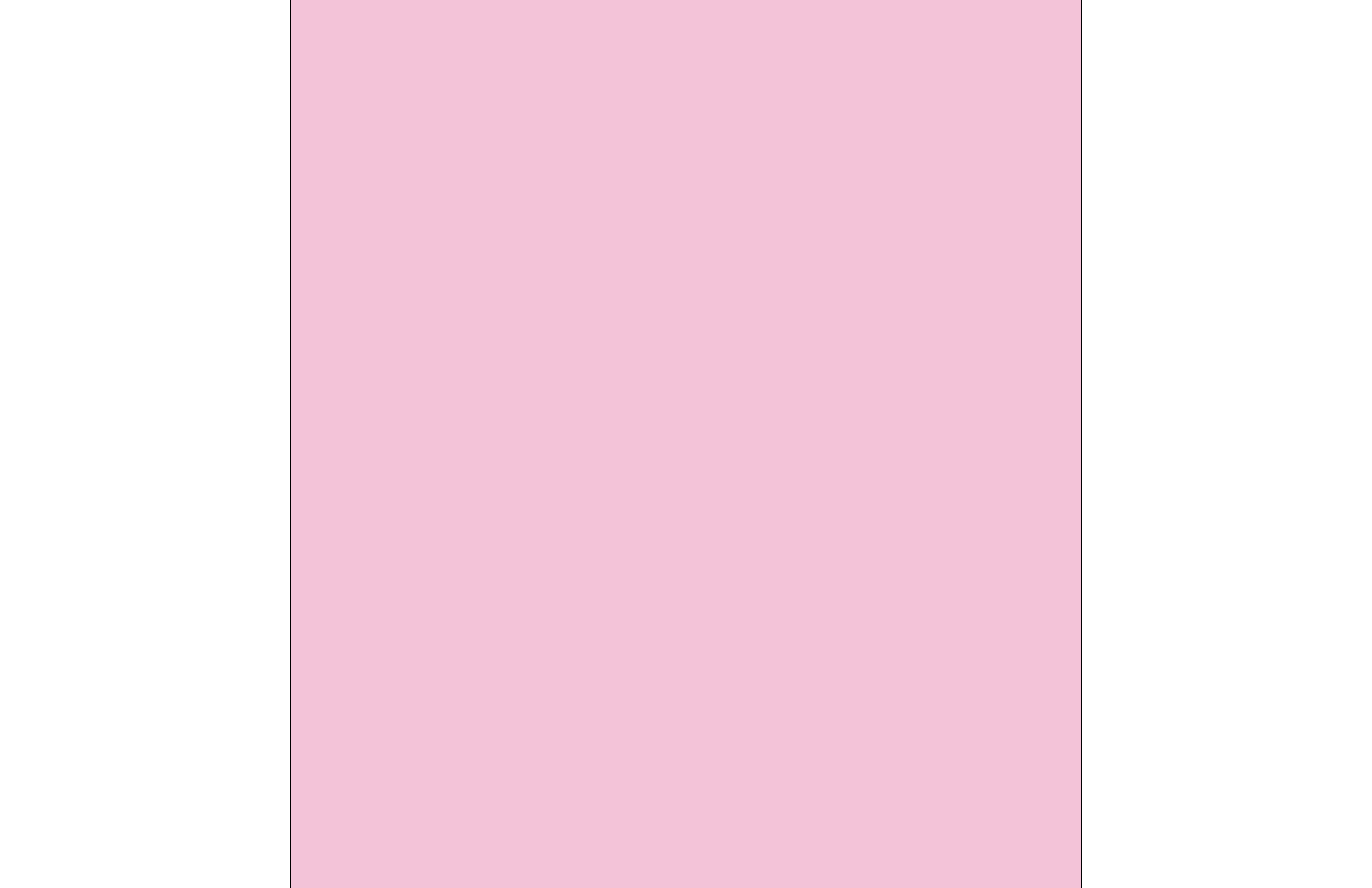


Ships at port in 1842.

## Valentine's Banquet

---







**SUMMER MISSIONS  
FUNDRAISER**

**VALENTINE'S  
BANQUET**



**\$10 PER PERSON**

**14 FEBRUARY**

**5:30 PM - 7:00 PM**

Pasta blended with Chicken

Garden Salad

Tea & Dessert



**KINGSBURY BAPTIST CHURCH**  
**6901 FM 2438**  
**KINGSBURY, TX 78638**



## Food Pantry and Thrift Store



## Card Raffle

Local artisan Sam Nunemaker has donated some absolutely beautiful handmade knives for a Playing Card Raffle



with all proceeds going to the Kingsbury Volunteer Fire Department.

The cards are \$20 and can be purchased at the Kingsbury Country Store on Railway Street where the knives are on display. There is a different deck of cards for each knife so get a card for your favorite knife or try for both!

Go on by the store and take a look at the craftsmanship of the Damascus steel blades and the **stunning** handmade handles with inlay.

The drawings will be held March 7th at the Kingsbury Country Store. Good Luck!!



**PLAYING CARD  
RAFFLE!**

For Beautiful  
Handmade  
Knives Donated  
By Sam  
Nunemaker

**\$20 per card**

All proceeds  
go to the  
Kingsbury VFD

## Trail Riders

The Mesquite Trail Riders came through Kingsbury on their way to the San Antonio Stock Show and Rodeo and had a Trail Riders Breakfast at Kingsbury Hall last Monday. It's always a wonderful time when they come through and they really **love** staying here and having the breakfast in downtown.

They presented the City of Kingsbury with a beautiful plaque showing their appreciation for our support before hitting the trail.

Pictures of the trail ride in Downtown Kingsbury are going up now on the blog on the Kingsbury [website](#).

See you next year!



















## Model T Raffle

---

The Pioneer Flight Museum here in Kingsbury is raffling off a **real** model T !

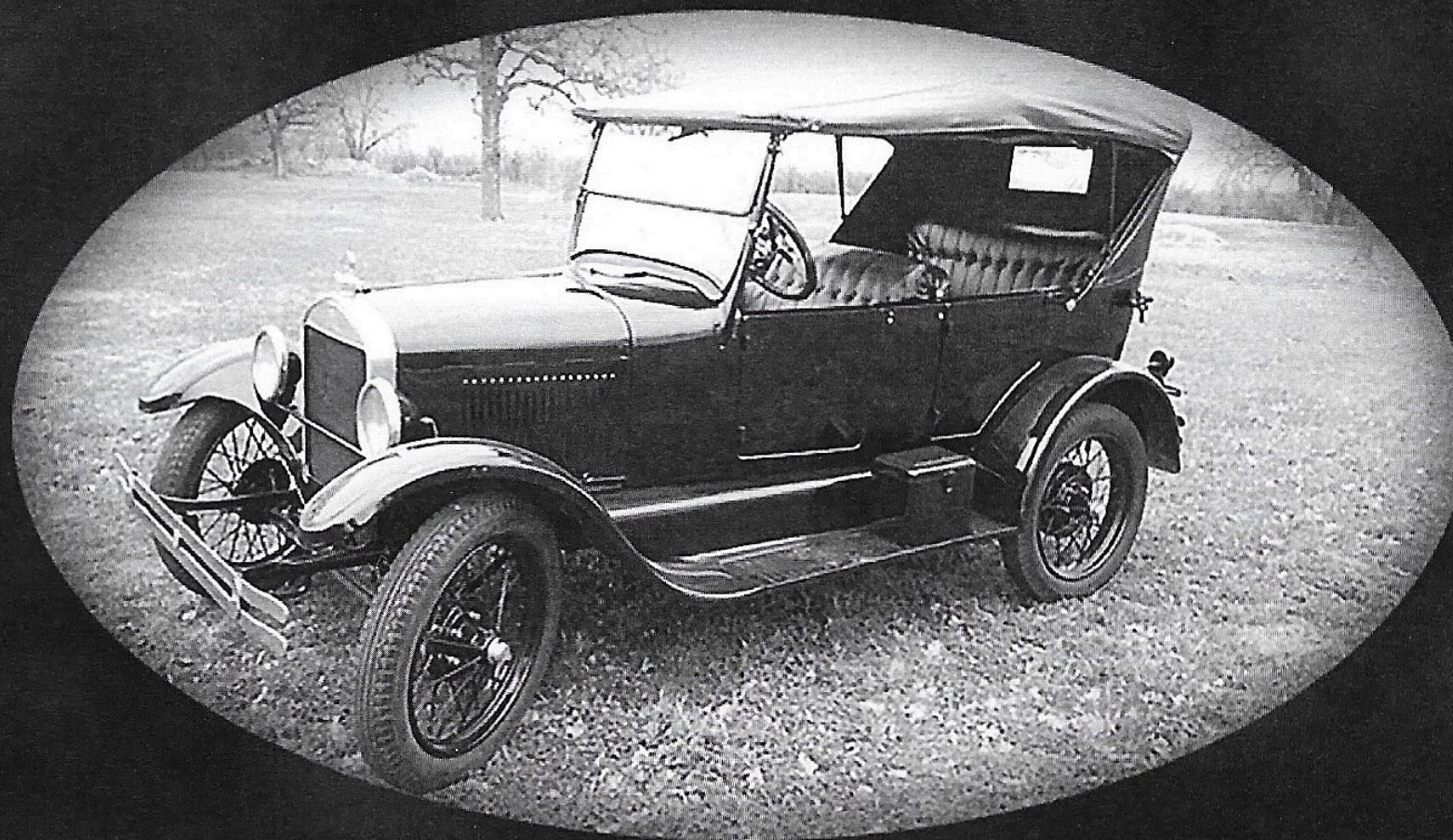
Details are below and more are available at <https://pioneerflightmuseum.org/raffle/>

The drawing will be May 4th, 2024 at the Spring Fly-In.



# Win This Car

Drawing: May 4, 2024



1927 Ford Model T Touring Car

- Raffle -

Drawing will be held at the Pioneer Flight Museum "Wings & Wheels" Event at 1:00 PM

Winner need not be present to win.

Pioneer Flight Museum is a  
501(c)(3) non profit  
organization dedicated to the  
history of aviation and  
transportation.

Ticket  
Price **\$50**

Ticket price is a donation to  
the museum, all proceeds  
will be used for the  
maintenance, operation and  
expansion of the museum.



Winner will be announced at the event, on our website and facebook page. Winner is responsible for all taxes, titling, licensing and any other fees associated with winning this car.

For a complete list of the rules and to buy tickets online please visit:

[PioneerFlightMuseum.org/Raffle](http://PioneerFlightMuseum.org/Raffle)

### Kingsbury and Valentine's Postcards

Sandra Watts from here in Kingsbury has a great collection of postcards that her great aunt saved from 1907 to around 1909.

Since Valentine's Day is this week, these are some of the Kingsbury and Valentines cards from that collection. The backs are as interesting as the fronts! And don't forget that "One cent" (or "Foreigh Two cents") stamp!

The backs of some of these cards have "post card" in a number of different **languages**:

*Postkarte - German*

*Carte postale - French*

*Post card - English (hopefully you got that one!)*

*Cartonlina postale - Italian*



*Briefkaart - Dutch*  
*Brefkort - Norwegian*  
*Correspondenzkarte - Bulgarian*  
*Dopisnica - Slovenian*  
*Dopisnice - Czech*  
*Karta korespondencyjna - Polish*  
*Levelező-Lap - Hungarian*  
*Tarjeta postal - Spanish*  
*Cartão postal - Portuguese*  
*Lots of funny looking letters not on my keyboard - Russian*





This Space For Writing Messages

POST CARD

Place  
Stamp Here  
Domestic  
One cent  
Foreign  
Two cents

CUPID VALENTINE SERIES NO. 1.

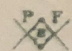
This side for the Address only.





Postkarte -- Carte postale -- Post card -- Cartolina postale  
Briefkaart -- Brevkort -- Correspondenzkarte -- Dopisnica  
Dopisnice -- Karta korespondencyjna -- Levelező-Lap  
Unione postale universale - Weltpostverein - Union postale universelle  
Tarjeta postal -- Cartão postal -- ОТКРЫТОЕ ПИСЬМО.

Printed in Germany

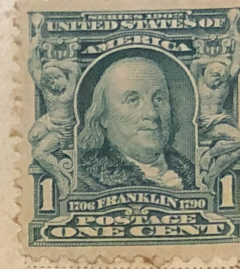
 SERIE 6241

GREETINGS  
FROM  
KINGSBURY





Postkarte — Carte postale — Post card — Cartolina postale  
Briefkaart — Brefkort — Correspondenzkarte — Dopisnica  
Dopisnice — Karta korespondencyjna — Levelező-Lap  
Unione postale universale - Weltpostverein - Union postale universelle  
Tarjeta postal — Cartão postal — ОТКРЫТОЕ ПИСЬМО.



Dear Buckle  
why don't  
you write  
to us your  
boy L.J.

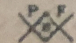
Mrs M. Childs  
1423 Willow St  
Austin Tex

P.F. No. 6096 Relief  
No. 6097 Brilliant





Postkarte — Carte postale — Post card — Cartolina postale  
Briefkaart — Brefkort — Correspondenzkarte — Dopisnica  
Dopisnice — Karta korespondencyjna — Levelező-Lap  
Unione postale universale - Weltpostverein - Union postale universelle  
Tarjeta postal — Cartão postal — ОТКРЫТОЕ ПИСЬМО.

 No. 6096 Relief  
No. 6097 Brilliant







FLY QUICKLY BIRDIE, TO MY DEAR.  
THIS MESSAGE SAFELY GIVE:  
I WOULD THAT THOU WERT ALWAYS NEAR.  
FOR THEE ALONE I LIVE!

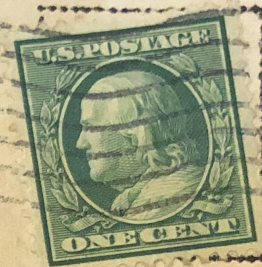
COPYRIGHTED BY R. L. WELLS, 1907

## Post Card.

This space may be used for correspondence.

I tried to ring those  
parties up but couldn't  
get them will try  
again tomorrow  
will keep trying  
until I get them  
by your H B.  
M.C.

Address only to be written here



Mr M. Childs  
Kingsbury  
Texas



## Know someone that should be on the Kingsbury Newsletter eMail List?

---

Send them this email! All they need to do is go to the [Kingsbury website](#), click on the weird little **dog** at the bottom of any page, and fill out their name and email address. It's so easy! Let's get everybody to be "in the know" about what's going on in their community.



Thanks!

*Kingsbury News & Information*

**For more information any time**

Visit our website - [www.kingsburytexas.org](http://www.kingsburytexas.org)

Visit us on Facebook - [www.facebook.com/KingsburyTexas](https://www.facebook.com/KingsburyTexas)

[Check out the Kingsbury Calendar & Weather](#) 

[Check out previous News & Information Newsletters](#) 





This email was sent to [kingsburytexas@gmail.com](mailto:kingsburytexas@gmail.com)  
[why did I get this?](#)   [unsubscribe from this list](#)   [update subscription preferences](#)  
City of Kingsbury · PO Box 99 · Kingsbury, TX 78638-0099 · USA

